

Glaitness School



School Travel Plan 2019

Introduction

The School Travel Plan looks at the journey to and from school. It seeks to make the journey safer and more sustainable. It encourages 'active' travel like walking or cycling as a way to promote healthy lifestyles. In addition, it encourages parents and staff to think about safe travel choices and choose alternatives to the car when coming to school.

A School Travel Plan can offer the following potential benefits to staff, parents and pupils:

- Improved road safety - it can increase the awareness and care taken by those accessing the site, by improving its amenity for walkers and cyclists and by reducing traffic levels in and around the site.
- Improved health - it can help promote active travel, encourage healthier and more active lifestyles and can complement other school initiatives.
- Independence - active travel, in particular, contributes to creating a sense of independence among the pupils.

Aims

The overall aims of this plan are to:

1. promote and improve safety for pupils on their journey to and from school;
2. promote and increase awareness amongst pupils, staff and parents of the health, safety, environmental and social consequences of their travel choices, i.e. walking and cycling; and
3. improve safety in the car parks around the school and around the school entrance

The School Travel Team

The School Travel Team is comprised of the Depute Head, Business Manager, Junior Road Safety Officers (JRSOs), staff, parents, and the Parent Council. Wider community advice is sought from the Community Safety Partnership (local forum for agencies in Orkney ie Police, Fire, NHS, OIC, OHAL).

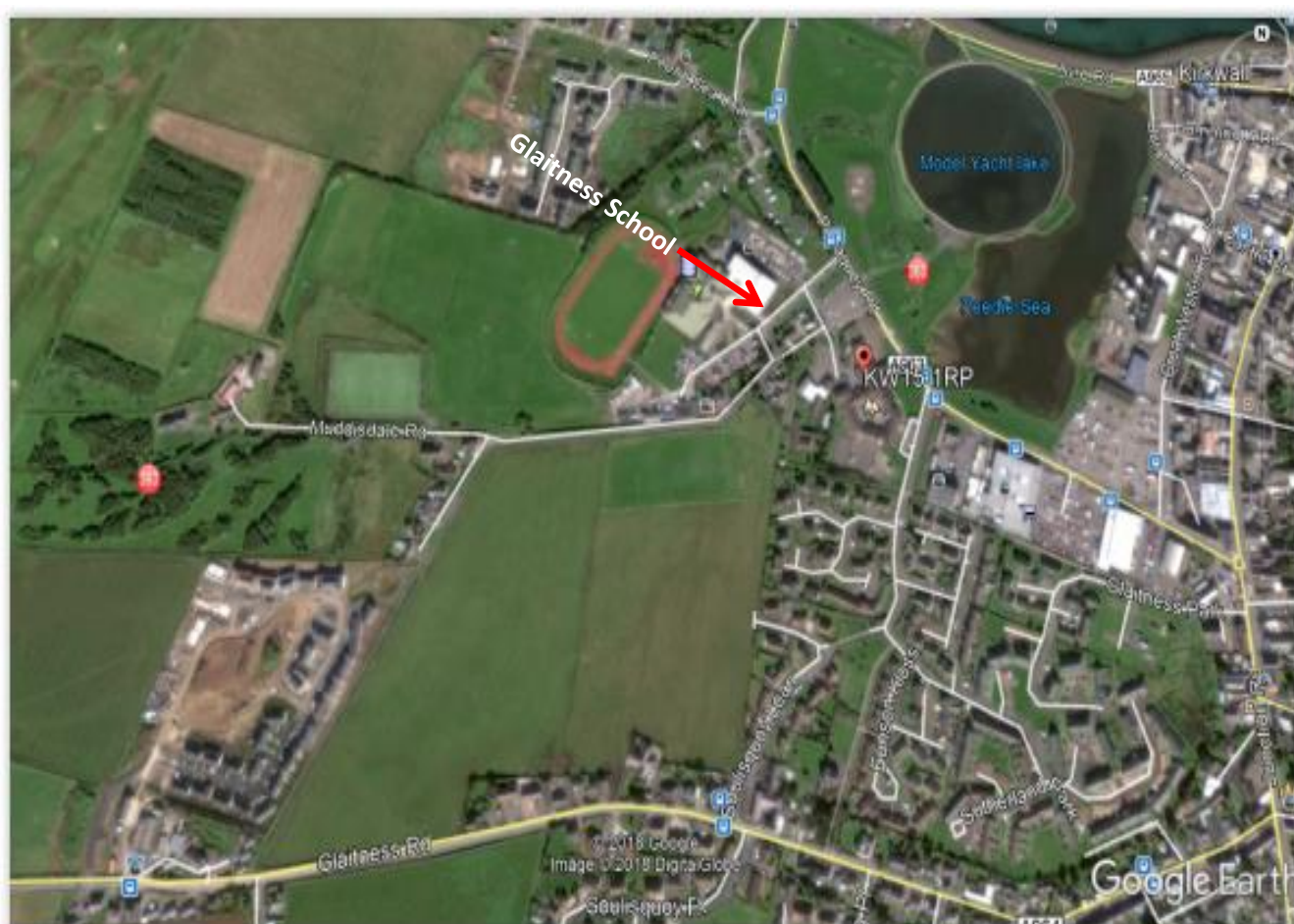
School Description

Glaitness School is located to the west of Kirkwall. It has a roll of approximately 258 pupils (including Early Years), some 60 part-time and full-time staff and a catchment area which includes the west side of Junction Road as far as Scapa and the adjacent rural area. A number of our pupils with additional support needs travel from other parishes within Orkney.

School starts at 9.20am for P4-P7 pupils and 9.30am for P1-P3 pupils.

The school day finishes at 3.30pm for all pupils.

There are 2 main Early Years sessions; 9.30am-12.00pm and 1.00pm-3.30pm.



Roads and Pavements

Our school is situated beside Pickaquoy Road, and accessed via Pickaquoy Loan to the east and Muddisdale Road to the West.



Pickaquoy Road has a zebra crossing and also a part time, mandatory 20mph speed limit between the times of 9.00-9.30am and 3.25-3.50pm on school days.



Pickaquoy Road and the entrance to Muddisdale Road are busy, subject to congestion at drop-off and pick-up times.



The Peerie Sea Loan development has a pavement along the main Pickaquoy Road leading to the school.

Pupils walking or cycling to school are encouraged to use the Safe Routes to School. See **Appendix 1** - Kirkwall Primary Schools Safe Routes to School.

Foot and Cycle Paths

There are a number of foot and cycle paths in the immediate school environment. Children are encouraged to use paths rather than the main roads if possible, however, some of these routes may require pupils to cross busy main roads.



There is a cycle path at the back of the school behind the Co-op and through the housing to join Glaitness Road.



A School Crossing Patrol Officer (SCPO) is located at the Co-op crossing on Pickaquoy Loan between 9.00-9.30am and 3.25-4.05pm to ensure pupil safety. Should the School Crossing Patrol Officer be ill and unable to supervise this crossing it will be announced on the morning programme of Radio Orkney.

The entrance and exit to Liberator Drive/Close is on the Old Finstown Road, with pavements heading into town. The photo below shows an alternative, quicker walking and cycling route. The unsegregated cycle track was upgraded when the upper part of the path was being established via the Liberator development.



This unsegregated cycle track then leads onto a single-track road. On one side of the road is a large deep ditch. The road currently has no pavement or streetlights from the Liberator Drive/Close path until the Rugby pitches are reached. Future developments on the Soulisquoy site will include for pedestrian access and links from the new unsegregated cycle track at Muddisdale.



Pupils are encouraged to walk on the right-hand side to face oncoming traffic and wear hi-viz particularly in the winter.



Once pupils have completed their Bikeability Level 2 training in P6 they can take their bikes to school where there is provision for 20 scooters and cycles in the shelter.

Pupils are expected to use cycle helmets. Any pupil without a helmet will be asked to push their cycles home, not ride on them.

Access/Cars and Buses

Vehicular access to the school is from Pickaquoy Road/Muddisdale Loan. This entrance leads to car parking facilities and drop off point. Staff also use this parking area during working hours.

Whilst a School Travel Plan is focused around promoting sustainable forms of transport, it is recognised that private cars will be used by some parents during winter months. Parents are also encouraged to support pupils in walking to school where possible.

Parents are reminded not to use the drop off point as a waiting zone and when picking up pupils drivers need to use the allocated parking spaces in the car-park as inconsiderate parking will have an impact on the safety of the pupils.

Parking - the upper car park for staff is shared with St.Colms.



The main car park at the side of the school is used by visitors and parents. This can at times become congested and care and consideration needs to be given by those using it.



The car parking area at the NHS Peedie Sea Centre is **not available** to Glaitness School users.

Entrances - **Staff and visitors** use the main entrance, close to St Colms, signposted from the car park. Some pupils with additional support needs receive specialist bus transport to/from the main school entrance. Pupils who arrive or leave out-with the usual school hours also use the main entrance.

How to get to the Main School Entrance

1. View from Main Car Park – follow the pavement to the right



2. Follow pavement round to the left



3. Turn left here. Walk down the path shown (there is wheelchair access via this path too)



4. Follow the path - be careful of vehicles manuvring in the area



5. Main entrance – the electronic doors are to the right side of the porch.



6. Press either access pad and the doors will open



Welcome to Glaithness School Reception!



Nursery pupils and parents enter the school by the Nursery entrance shown below:



Pupils use a different entrance to access and exit the school to reduce the likelihood of contact with transport dropping off/collecting pupils with additional support needs at the main entrance. The majority of pupils enter and exit the school from the car park immediately adjacent to the playground which faces onto Pickaquoy Road.



School Transport

There are currently 2 bus routes which children from outlying areas use. These cover the areas of Scapa and Lesliedale and 30 pupils are currently entitled to use the service. The school buses use the drop off zone on the Pickaquoy Road bus stop outside Glaitness School when dropping off and collecting pupils from school. Pupils with additional support needs who travel by mini-bus or taxi with an escort come from Kirkwall and areas all over mainland Orkney. Thirteen children make use of transport for pupils with Additional Support Needs.

Glaitness School expects pupils to enter and exit the bus in an orderly manner and remain seated throughout the journey. Pupils are also expected to wear a seat belt while on the bus. OIC guidelines will be followed if a pupil does not follow the expected behaviour see Code of Conduct

http://www.orkney.gov.uk/Files/Education-and-Learning/School_Transport_Conduct.pdf

School Transport Entitlement

Qualification varies according to a pupil's age and the distance they live from the school:

QUALIFYING DISTANCE FROM SCHOOL		
SCHOOL PUPIL	EASTER-OCT	OCT-EASTER
Age 7 and under	over 2 miles	over 1.5 miles
Age 8 and over	over 3 miles	over 1.5 miles

Further details of various aspects of school transport provision including the School Transport Policy, newsletters, and advice to and the responsibilities of parents/carers is available at <http://www.orkney.gov.uk/Service-Directory/S/School-Transport.htm> or contact the Education Transport Officer, telephone 01856 873535 extension 2427.

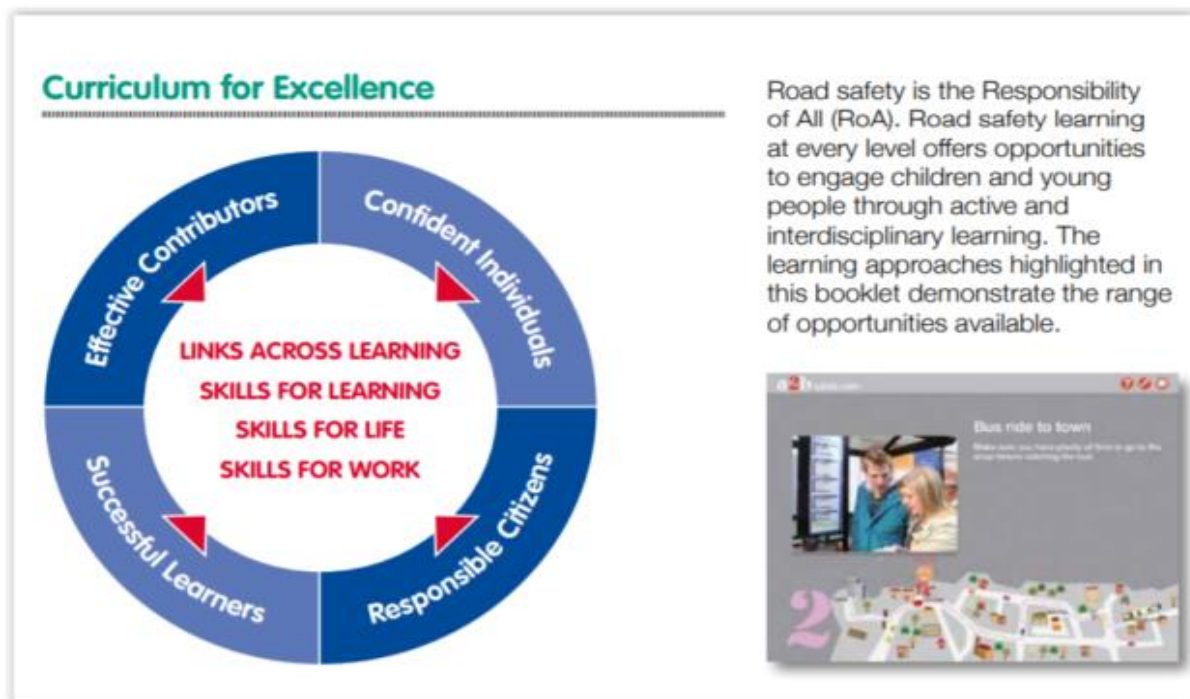
There are times when transport may be mobilised early due to adverse weather conditions. Parents/carers must therefore ensure that their contact details and emergency contact numbers are kept up to date with the school to assist this process.

Public Bus Service

The local town service operates daily and stops outside the school. To help plan your journey, please consult <https://www.stagecoachbus.com/timetables>

Education

In line with Curriculum for Excellence, pupils are taught about road safety at all stages.



Road safety learning and the seven principles of Curriculum for Excellence



Progression — young people, as road users, experience continuous progression in their learning with each stage building upon earlier knowledge and achievements.

Depth — young people, as road users, are given opportunities to draw on previous experiences and apply these to new situations.

Relevance — young people, as road users, see the value of what they are learning and its relevance to their lives.

Breadth — young people have the opportunity to learn and develop as road users through a range of experiences.

Personalisation and Choice — young people are given increasing opportunity for exercising responsible personal choice as road users.

Challenge and Enjoyment — road safety learning provides young people with experiences that are challenging at an appropriate level.

Coherence — road safety learning provides young people with opportunities for activities which draw different strands of learning together.

Road safety learning at every level

Early	ELC P1	Go Safe with Ziggy	streetsense2	School Travel Plans
First	P2 P3 P4	streetsense2		School Travel Plans
Second	P5 P6 P7	streetsense2	JRSO	Reaction Timer
		a2bsafely	Theatre-in-Education (P6 & P7)	

Source: <https://roadsafety.scot/wp-content/uploads/2018/09/CfE-2018-19-booklet.pdf> Pg 04

A range of opportunities to engage children at every level in road safety learning are available:

Go Safe With Ziggy

To inspire a child's interest in road safety learning, exploring key themes through active experience and play. Children have the opportunity to work with the Road Safety Scotland resources at home and at school. The initiative has 3 key age groups 0-3, pre-school and transition into P1.

Streetsense2

To challenge knowledge, attitudes and behaviours, enabling children to self-reflect.

JRSO All Together for Road Safety

To encourage peer learning and promote road safety issues through partnership working.

The introduction of Junior Road Safety officers in P6 and P7 has allowed for the opportunity to raise awareness in school through competitions, assemblies and a noticeboard.

Theatre-in-Education

To raise awareness of the coming dangers to which this age group will be exposed during the next few years, helping them realise why those dangers are particularly relevant to their age group and to enable them to analyse, discuss and change decisions and outcomes.

Bikeability

Bikeability is a multi-level programme delivered by Cycling Scotland designed to give pupils the skills and confidence on their bikes and have a good understanding of how to ride safely on quiet roads. Schools to deliver:

Playground training for Bikeability Level 1 to Primary 5 pupils

On-road training for Bikeability Level 2 to Primary 6 & 7 pupils.

Play on Pedals

Play on Pedals is a pre-school, early years resource that links into the national Bikeability Scotland training programme, through a series of fun and imaginative activities, nursery pupils will be helped to develop their balance and control skills.

Bus Stop/Hometime

These resources increase the road safety awareness of young people using school transport highlighting pupils responsibilities when crossing country roads after getting off the bus and also to focus on distractions that can have potential tragic consequences

Pupils who use bus transport regularly meet to review safety and comfort issues.

Walk to School Initiatives

We participate in annual initiatives to promote healthy and environmentally friendly ways to travel to school. During summer months pupils are more likely to walk or cycle to school.

Safety Vests

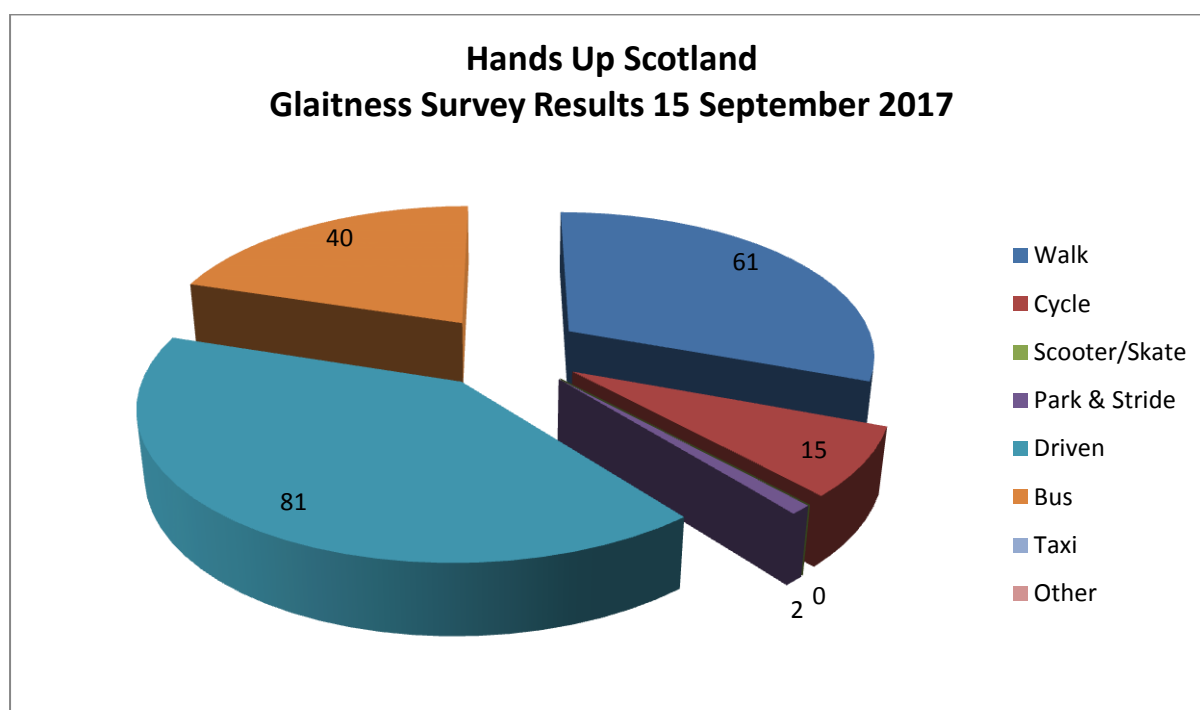
All P1 pupils are provided with a hi-viz vest at the beginning of the session. Glaitness School distributes vests to other pupils along with other fluorescent/flashing/reflective items in connection with schools excursions and JRSO initiatives. Pupils walk regularly outwith the school grounds using planned routes to develop road safety and crossing skills. When away from school on trips children and adults are provided with safety vests. We also advertise the availability of larger fluorescent vests and arm-bands which are available from the school office at nominal cost.

All pupils are provided with reflective disks during the winter months. Pupils are actively encouraged to wear these at all times when distributed.

How to maintain safety while travelling in poor light or adverse weather conditions is a focus during winter months. Teaching also occurs through assemblies and visits from road safety organisations.

School Travel Survey 2017

The Hands Up Scotland survey to gather information about how our pupils travel to and from school was conducted on 15th September 2017. The results of travel mode for children at school that day were analysed and full results are noted below.



The majority of pupils are driven to school.

Monitoring & Review

The School Travel Plan will be reviewed by the Head Teacher on a 3 yearly basis. Progress will be measured by undertaking further questionnaires to parents as required and then annually by participating in the National Hands Up Survey.

Promotion

The School Travel Plan will be on the school's website and on the School's Noticeboard. Copies can be requested from the school office.

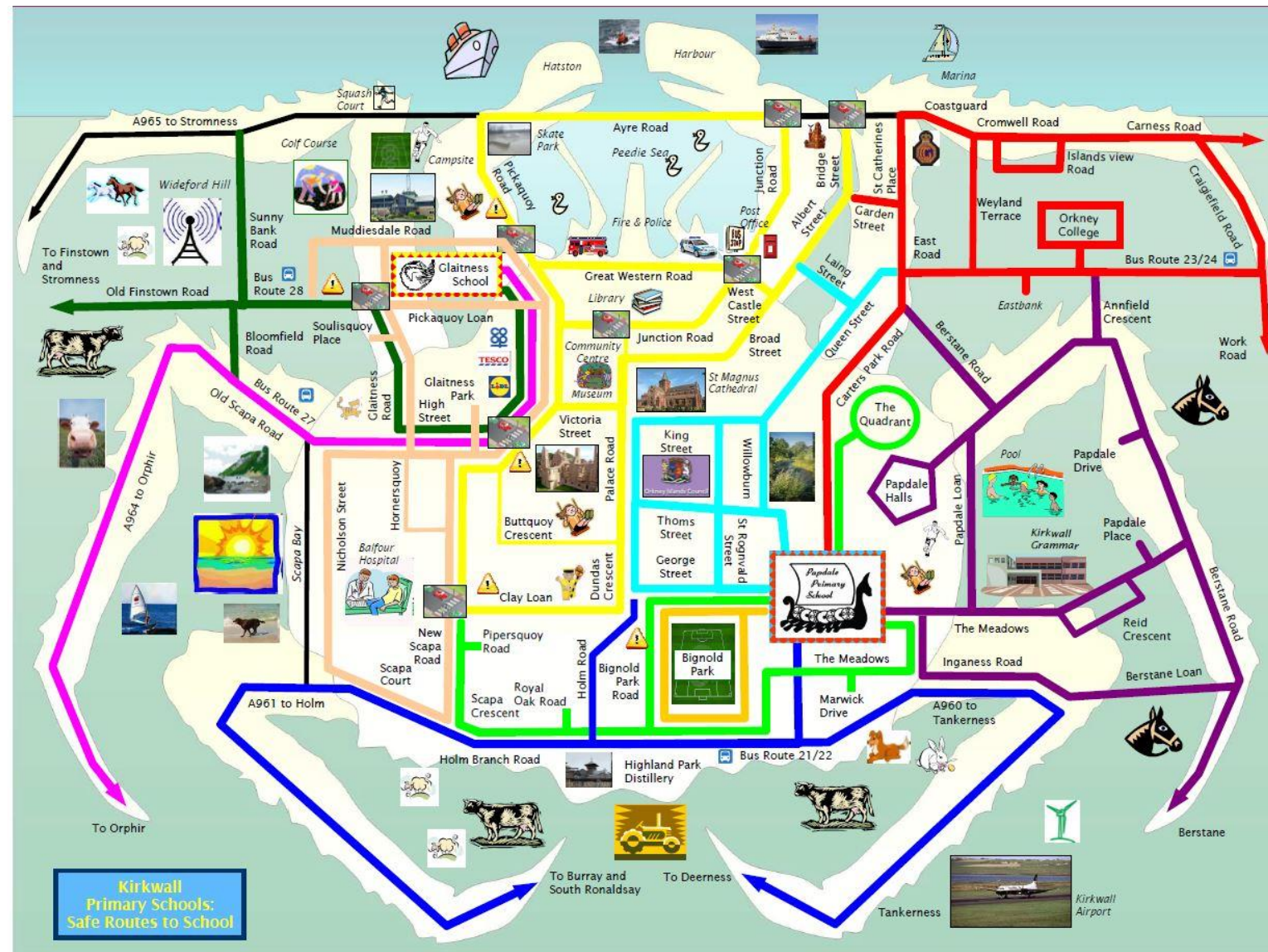
Glaitness School – School Travel Action Plan

Aim	Target	Action	Personnel	Timescale	Funding
To promote and improve safety for pupils on their journey to and from school	Review existing and investigate other potential safe crossing points	Locate School Crossing Patrol Officer on these crossing at school time to support pupils to cross safely	Education Service, OIC	Short Term	OIC
	Review existing part time, mandatory 20mph speed limit on Pickaquoy Road	To extend the part time, mandatory 20mph speed limit on Pickaquoy Road on the north west side of its junction with Peerie Sea Loan and on its south-east side of the Tesco Car park junction.	Development & Infrastructure OIC	Short Term	OIC
	Reduce unnecessary car journeys to/from school	Promote active travel, encourage healthier and more active lifestyles that can complement other school initiatives.	Head Teacher	Medium Term	
	To educate the pupils on road safety issues including the use of zebra crossings	Junior Road Safety Officers used in school with P6/7 pupils	Road Safety Officer	Short Term	
	Road Safety is included in the curriculum on a regular basis	Continue to use Road Safety Scotland and Cycling Scotland's resources	Teachers /JRSOs	Short Medium & Long Term	
	Raise awareness of the Safe Routes to School	Update the Safe Routes to School map to include routes from the new housing developments at Walliwall and McLeod Drive with safe crossing place on Muddisdale Road.	Head Teacher /JRSOs	Short	
Aim	Target	Action	Personnel	Timescale	Funding

To increase awareness amongst pupils, staff and parents of the health, safety, environmental and social consequences of their travel choices, ie walking and cycling	To increase the number of pupils who walk to school on a regular basis.	Participate in Walk to School Week Participate in Living Street's walking initiative WOW. Encourage pupils to identify the impact of travel decisions via competitions.	Head Teacher Head Teacher JRSOs	Long Term Long Term Short Medium & Long Term	Sustrans through RSO, OIC
	To increase the number of pupils who cycle to school on a regular basis.	Continue to deliver Bikeability Level 1 to all P5 pupils. Continue to deliver Bikeability Level 2 on-road training to all P6 pupils.	Cycle Training Assistants/ P5 Teacher Cycle Training Assistants/ P6 Teacher	Short Term Short Term	
	Further enhance cycle volunteers skills & knowledge	Cycle volunteers to attend one day certificated course 'Cycle Training Assistant' to enable them to deliver Bikeability Levels 1 & 2.	Volunteer Cycle Trainers and school staff.	Medium Term	Cycling Scotland through RSO, OIC
	To increase the number of staff and visitors walking or cycling to the school.	Provide Transport & Travel info and Route Maps.	Head Teacher	Short Term	
Aim	Target	Action	Personnel	Timescale	Funding
Continued ... To increase	Inform parents & pupils and keep them up to date	Produce Transport & Travel Information: Bus Info: School & Public Service	Head Teacher	Short Term	

awareness amongst pupils, staff and parents of the health, safety, environmental and social consequences of their travel choices, ie walking and cycling		Parents Evening - display all travel info for parents to peruse.	Head Teacher /JRSOs	Short Term	
		Promotion of walk and cycle paths	School Staff	Short Term	
		Promotion of cycle facilities	School Staff	Short Term	
		Promote the health, environmental and social consequences of their travel choices.	School Staff	Short Term	
				Short Term	
To improve the safety in the car parks around the school and around the school entrance	Encourage responsible parking by those who need to drive	Investigate priority spaces in car park for car sharing ie multi occupancy	Head Teacher	Long Term	
		JRSOs to monitor car park: drop off place, car sharing spaces, disabled parking.	Head Teacher	Short Term	
		Investigate staggering the finishing time of pupils as is done for start times.	Head Teacher	Short Term	

Appendix 1 - Kirkwall Primary Schools Safe Route to School

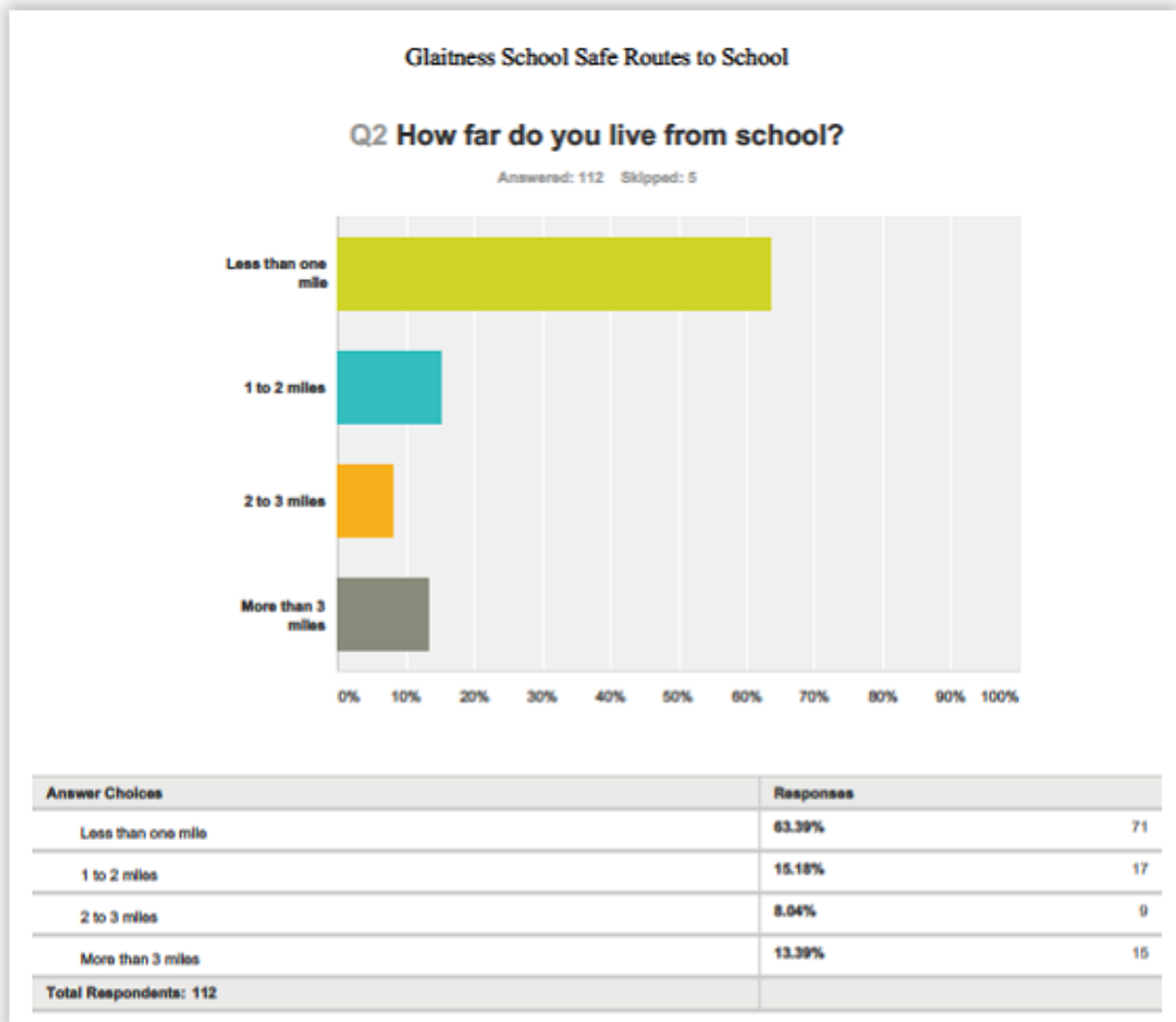


<p>RED</p> <p>"Willow Bubbles"</p> <p><u>What to look for:</u></p> <p>Marina Coastguard Kirkwall Hotel Harbour Ferries North Isles Boats Dogs Willow Burn Cats Birds Cars Orkney College Rendalls</p> <p><u>Dangers:</u></p> <p>Cars, buses & taxis at St Catherine's Place.</p> <p>Look out for cars on East Road and Cromwell Road</p> <p>Beware in Stormy conditions when walking along Carness Road and Cromwell Road</p>	<p>GREEN</p> <p>"Wild Meadows"</p> <p><u>What to look for:</u></p> <p>Royal Oak House Bignold Park Papdale Shop BB Hall Lollypop men Kirkwall Grammar School Frogs! Cats Willow Burn Nature & wild life Gnomes!</p> <p><u>Dangers:</u></p> <p>Wasps and Dog Mess!</p> <p>Cars, buses & taxis: Bignold Park, The Meadows and at Papdale school entrance.</p> <p>Dangerous crossings at Bignold Park Road and Marwick Drive</p>	<p>ORANGE</p> <p>"Bignold Birds"</p> <p><u>What to look for:</u></p> <p>Bignold Park Falling Leaves! BB Hall Kirkwall Grammar School Lollypop lady Trees Birds Football field Dogs Cats Ice cream Van Coloured Houses!</p> <p><u>Dangers:</u></p> <p>Slippery leaves</p> <p>Cars and Buses around Bignold Park.</p> <p>Dangerous crossings at Bignold Park and at the school entrance.</p>	<p>LIGHT BLUE</p> <p>"St Magnus"</p> <p><u>What to look for:</u></p> <p>St Magnus Cathedral Spooky House! Council Offices Bignold park White Street Willow Burn Guide Hut Brandyquoy Park Kirkwall Grammar School Meadowbank BB Hut Birds Tons of Cats! Friendly Lollypop Man Main roads</p> <p><u>Dangers:</u></p> <p>Cars, buses & taxis: Bignold Park Road</p> <p>Dangerous crossing at Palace Road</p> <p>Clay Loan and George Street</p>	<p>PURPLE</p> <p>"Robin Woods"</p> <p><u>What to look for:</u></p> <p>Woods Trees and Bushes KGS Swimming Pool Lollypop Man Papdale Halls Cats and Dogs Football pitches Houses Garages and Sheds Chimneys and tiles Bins Lamposts Bikes Playpark Birds: Blackbirds, Seagulls, Wagtails, Robins, Sparrows and Oyster Catchers!</p> <p><u>Dangers:</u></p> <p>Papdale Road junction, KGS Road and BB Hall junction.</p> <p>Wasps Bees and dogs</p> <p>Icy footpaths in winter</p>	<p>BROWN</p> <p>"Zebra Cats"</p> <p><u>What to look for:</u></p> <p>Zebra crossings Hundreds of cats! The Harbour: Views of boats The northern Isles Peedie Sea, with swans and ducks Supermarkets Lollypop lady Wideford Hill, with summer heather and winter snow Horses Dogs Playpark</p> <p><u>Dangers:</u></p> <p>Road crossing at Old Scapa Road.</p> <p>Zebra crossing at Glaitness Road</p> <p>Lots of cars going to the supermarkets on Pickyquoy Road.</p>	<p>YELLOW</p> <p>"Lollypop Drivers"</p> <p><u>What to look for:</u></p> <p>St Magnus Cathedral Cycle Orkney Boats and Ferries Hotels Peedie sea swans Kirkwall Bay The Places The Museum Community Centre Kirk Green Graveyard Picklequoy Sports Centre The Library Police Station Fire Station Bus Station Post Office</p> <p><u>Dangers:</u></p> <p>Cars Buses and Lorries on Picky road.</p> <p>Junction road crossing</p> <p>Getting on the bus at the school and look out for cars when getting off.</p>
---	---	--	---	--	--	---

<p>RED – Bus Route 23/24</p> <p><u>What to look for:</u></p> <p>Marina, Coastguard, Kirkwall Hotel, Harbour Ferries, North Isles Boats, Dogs, Cats, Birds, Cars, Orkney College, Rendalls Shop</p> <p><u>Dangers:</u></p> <p>Getting on the bus at the school and look out for cars when getting off at home.</p> <p>Traffic on East Road, Cromwell Road, Carness Road, and St Catherine's Place.</p>	<p>BLUE – Bus Route 21/22</p> <p>"Flying Sheep"</p> <p><u>What to look for:</u></p> <p>Airport, Planes, Helicopters, Cars, Streamline, Windmills, Tractors, Trees, a Spooky House and lots and lots of animals: Sheep, Shetland ponies, Horses, Foals, Birds, Mice, Ducks, Rats, Voles, Dogs, Cats, Gulls and Robins!</p> <p><u>Dangers:</u></p> <p>Look out for rabbits jumping out into the roads, and low flying planes at the airport are scary!</p> <p>Slow moving tractors, and fast moving police cars and ambulances are dangerous.</p>	<p>PINK – Bus Route 27</p> <p>"Country Cruisers"</p> <p><u>What to look for:</u></p> <p>Supermarkets, Peedie Sea, Fish and Chip Shop, Aurora Jewellery, Scout Hall, Wideford Hill, Spooky House, Scapa Bay, Finstown, Bowling Alley, Salvation Army, Sheep, Cows and Swans.</p> <p><u>Dangers:</u></p> <p>The blind summits on the main road, because you can't see the traffic coming.</p> <p>Road crossings, holes in the road, black ice, fast cars, tractors, traffic lights, roundabouts and Kangaroo petrol!!</p>	<p>DARK GREEN – Bus Route 28</p> <p>"Scapa Crabs"</p> <p><u>What to look for:</u></p> <p>Scapa Bay, distillery, Wideford Hill, Supermarkets, Peedie sea, Fields, Rivers, Farms, Phone box, Chip Shop, Cars for Sale, Otters, Cows, Swans, Birds, Ducks, Horses, Geese and Lollypop Lady</p> <p><u>Dangers:</u></p> <p>Cars coming out of the supermarkets and cars overtaking when getting off the bus</p> <p>Animals on the road, look out for fast cars and buses and icy roads in winter.</p>
--	---	---	--

Appendix 2 - Safe Routes to School Questionnaire: March 2017

A survey of Safe Routes to School was carried out during Parents' Evenings in March 2017. Here are the responses to the questionnaire:



Glaitness School Safe Routes to School

Q3 Please give the age of your child(ren)?

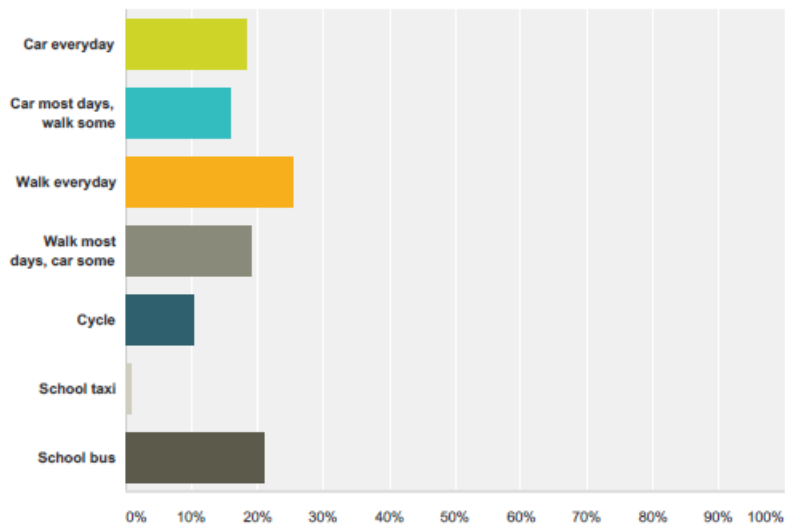
Answered: 117 Skipped: 0

Answer Choices	Responses	
Child 1	100.00%	117
Child 2	56.41%	66
Child 3	11.97%	14
Child 4	2.56%	3
Child 5	0.00%	0
Child 6	0.00%	0

#	Child 1	Date
1	4	4/23/2017 3:46 PM
2	4	4/23/2017 3:45 PM
3	10	4/23/2017 3:44 PM
4	17	4/23/2017 3:43 PM
5	11	4/23/2017 3:42 PM
6	9	4/23/2017 3:41 PM
7	11	4/23/2017 3:40 PM
8	11	4/23/2017 3:40 PM
9	5	4/23/2017 3:39 PM
10	6	4/23/2017 3:38 PM
11	11	4/23/2017 3:37 PM
12	10	4/23/2017 3:36 PM
13	5	4/23/2017 3:35 PM
14	8	4/23/2017 3:34 PM
15	5	4/23/2017 3:33 PM
16	9	4/23/2017 3:33 PM
17	7	4/23/2017 3:32 PM
18	9	4/23/2017 3:31 PM
19	4	4/23/2017 3:29 PM
20	5	4/23/2017 3:28 PM
21	12	4/23/2017 3:27 PM
22	9	4/23/2017 3:26 PM
23	8	4/23/2017 3:24 PM
24	9	4/23/2017 3:23 PM
25	8	4/23/2017 3:21 PM
26	11	4/23/2017 3:21 PM
27	10	4/23/2017 3:20 PM
28	9	4/23/2017 3:19 PM
29	12	4/23/2017 3:17 PM
30	7	4/23/2017 3:16 PM

Q4 On a normal day, how does your child usually get to school?

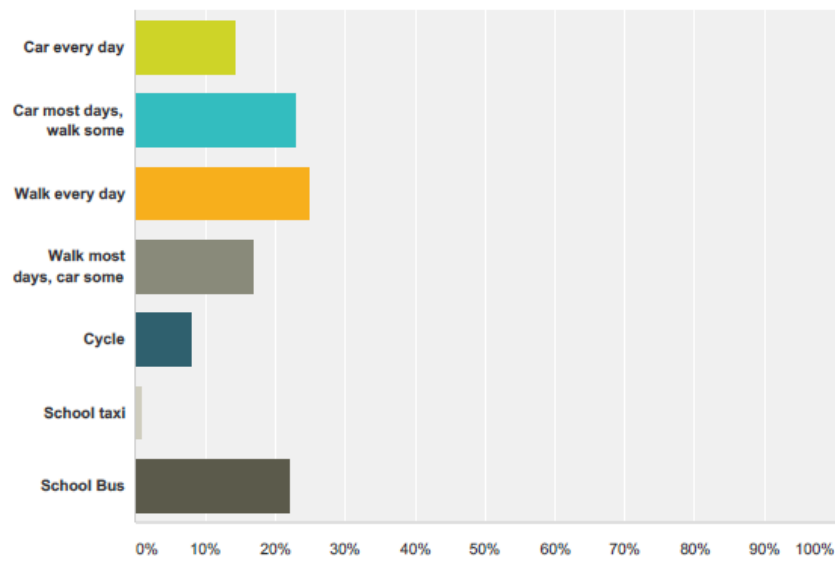
Answered: 114 Skipped: 3



Answer Choices	Responses	
Car everyday	18.42%	21
Car most days, walk some	15.79%	18
Walk everyday	25.44%	29
Walk most days, car some	19.30%	22
Cycle	10.53%	12
School taxi	0.88%	1
School bus	21.05%	24
Total Respondents: 114		

Q5 On a normal day, how does your child usually get from school?

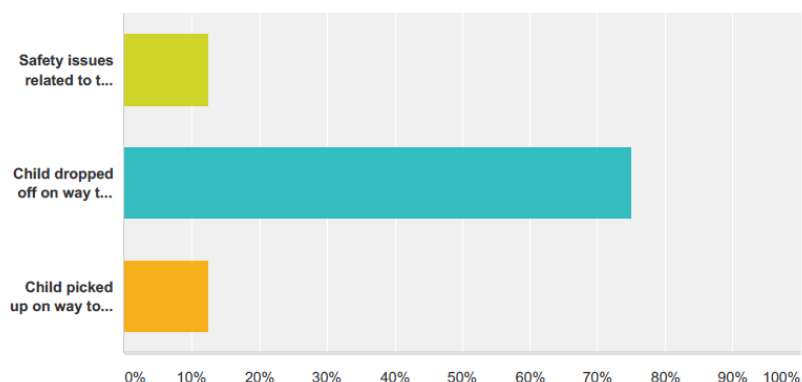
Answered: 113 Skipped: 4



Answer Choices	Responses	
Car every day	14.16%	16
Car most days, walk some	23.01%	26
Walk every day	24.78%	28
Walk most days, car some	16.81%	19
Cycle	7.96%	9
School taxi	0.88%	1
School Bus	22.12%	25
Total Respondents: 113		

Q6 If your child is eligible for bus transport, but does not use it, please indicate why (please tick all that apply)

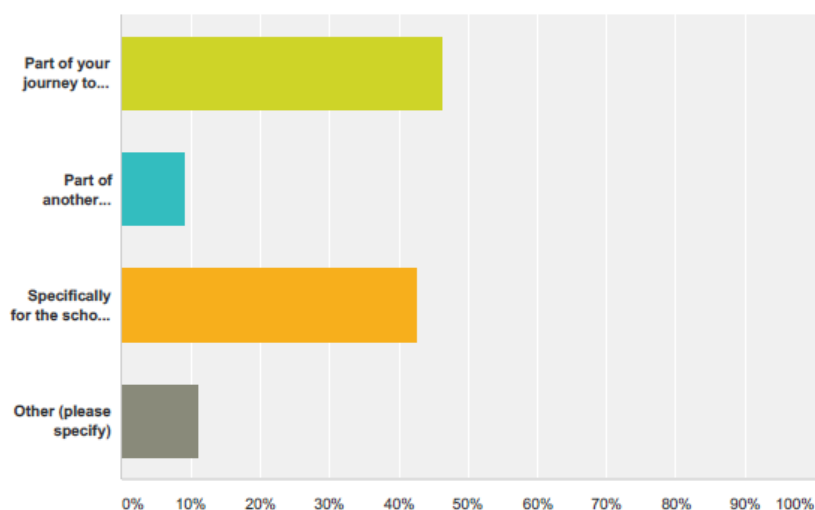
Answered: 8 Skipped: 109



Answer Choices	Responses	
Safety issues related to the bus (please specify)	12.50%	1
Child dropped off on way to work	75.00%	6
Child picked up on way to other activities	12.50%	1
Total		8

Q7 If your child is normally taken to school by car, is this usually:

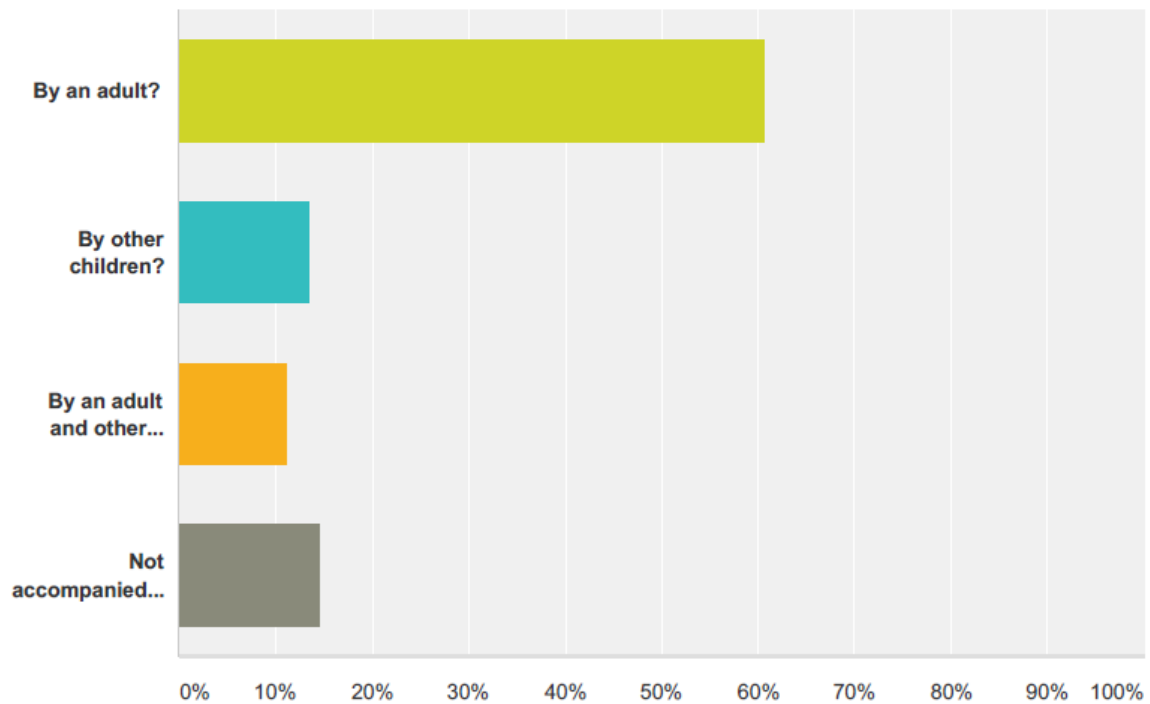
Answered: 54 Skipped: 63



Answer Choices	Responses	
Part of your journey to work?	46.30%	25
Part of another journey, e.g. shopping?	9.26%	5
Specifically for the school run?	42.59%	23
Other (please specify)	11.11%	6
Total Respondents: 54		

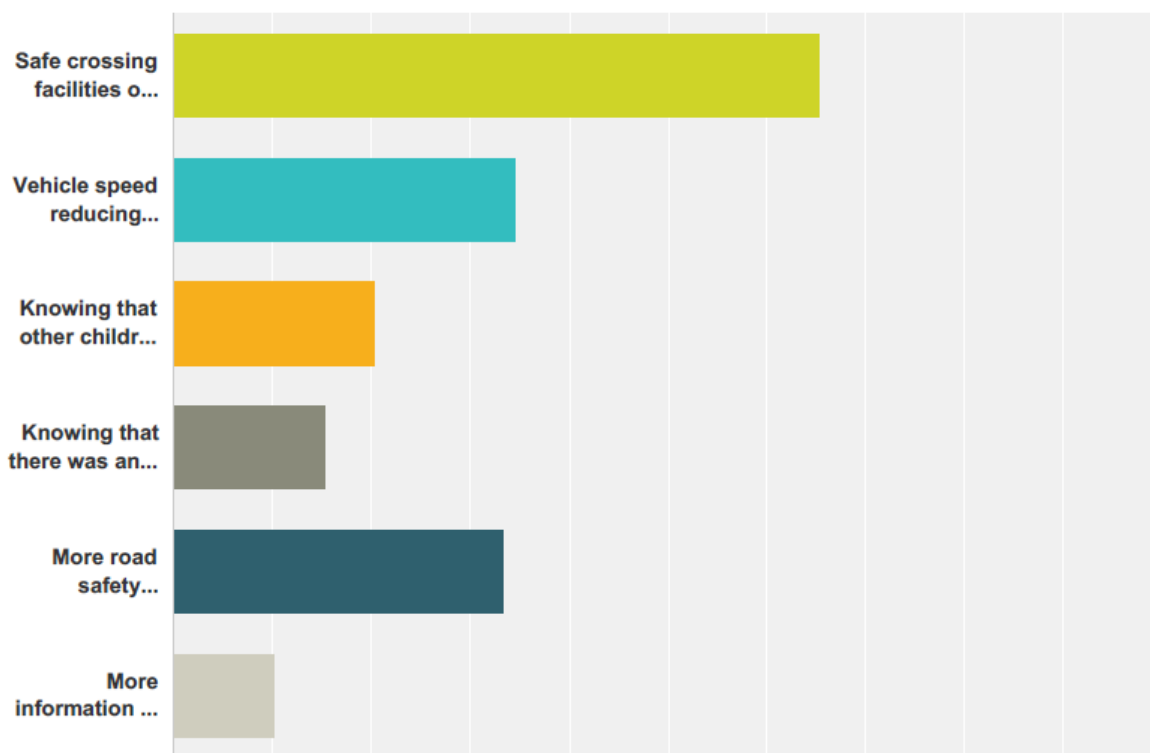
Q8 Is your child accompanied to/from school? (do not complete if your child travels by school bus)

Answered: 89 Skipped: 28



Q9 What factors might affect your decision whether or not to let your child walk or cycle to school?

Answered: 78 Skipped: 39

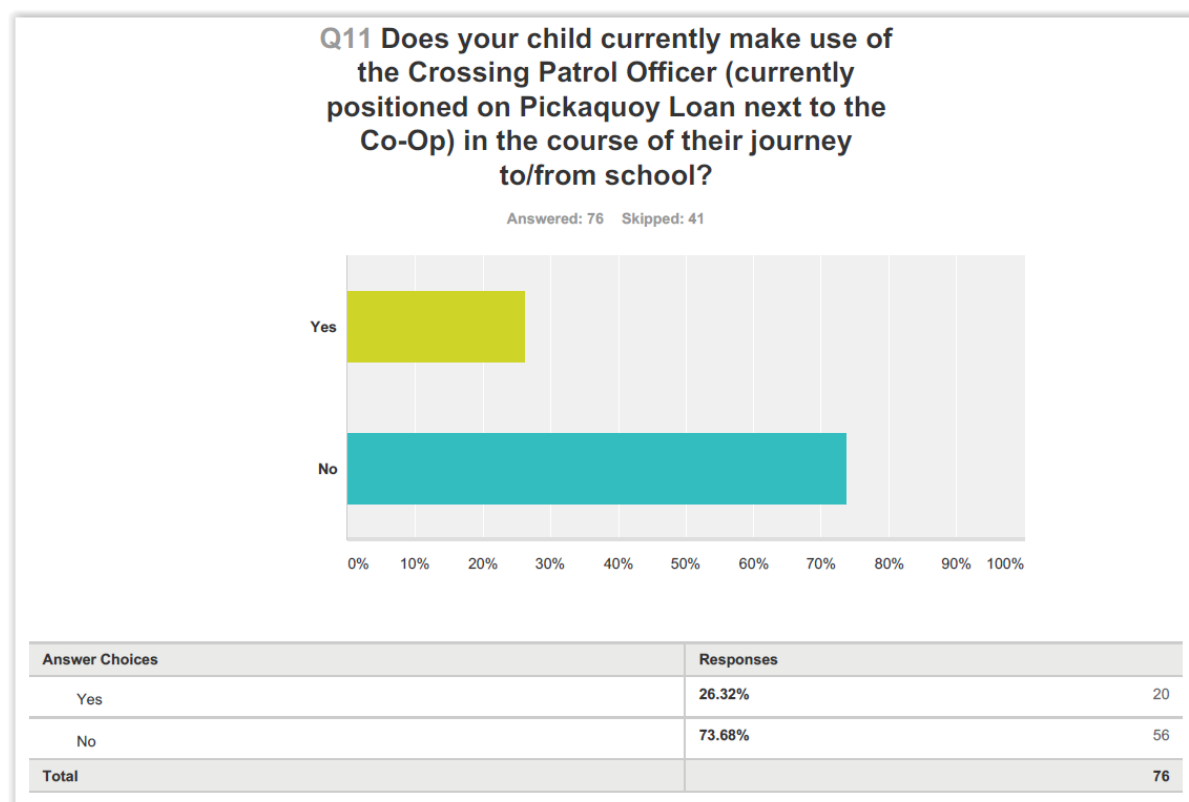


Q10 If you live within walking distance to the school, but you drive your child to school, why is this?

Answered: 44 Skipped: 73

#	Responses	Date
1	Will not do currently	4/23/2017 3:46 PM
2	On the safe side	4/23/2017 3:38 PM
3	Wife works at school	4/23/2017 3:36 PM
4	Safer	4/23/2017 3:33 PM
5	I work in the school, not safe enough	4/23/2017 3:31 PM
6	Weather, running late	4/23/2017 3:29 PM
7	Only if the weather is bad	4/23/2017 3:28 PM
8	Is on my way to work	4/23/2017 3:27 PM
9	Junction Road is busy at 9am. Unsure if daughter is confident enough to use it.	4/23/2017 3:26 PM
10	Due to work reasons/too little yet	4/23/2017 3:20 PM
11	Terrible weather, running late	4/23/2017 3:19 PM
12	As part of journey to work/bad weather	4/23/2017 3:09 PM
13	Do both	4/23/2017 3:05 PM
14	Only when very poor weather or have to en route to appointments	4/23/2017 3:04 PM
15	He won't go to school	4/23/2017 3:02 PM
16	Main road - no warden to help	4/23/2017 2:58 PM
17	Drive if I am working	4/23/2017 2:53 PM
18	Work route	4/23/2017 2:43 PM
19	Travelling to work	4/23/2017 2:41 PM
20	Evie (at grandparents)	4/23/2017 2:40 PM
21	I work, so saves time	4/23/2017 2:39 PM
22	Depends on weather and time, on way to work	4/23/2017 2:38 PM
23	Child needs	4/23/2017 2:35 PM
24	Only if weather is bad	4/23/2017 2:34 PM
25	Weather permitting	4/23/2017 2:23 PM
26	Weather and work	4/23/2017 2:18 PM
27	Travel to work after drop-off	4/23/2017 2:14 PM
28	Journey to work/picking up sibling from childcare	4/23/2017 2:07 PM
29	Weather	4/23/2017 12:40 PM
30	To save time	4/23/2017 12:38 PM
31	Poor weather sometimes/already going to work	4/23/2017 12:35 PM
32	Part of journey to work	4/23/2017 11:58 AM
33	Weather	4/23/2017 11:56 AM
34	Only when extreme weather	4/23/2017 11:55 AM
35	Very seldom, when heavy raining only	4/23/2017 11:47 AM
36	If I'm in a hurry	4/23/2017 11:45 AM

37	It's not safe for him to cross. I make him walk through campsite if he really wants to walk to minimise risk but this creates further risk if campsite is full.	4/23/2017 11:42 AM
38	Mother is always late	4/23/2017 11:34 AM
39	Driving days - weather related or running late	4/23/2017 11:31 AM
40	Childcare	4/23/2017 11:28 AM
41	Weather	4/22/2017 2:06 PM
42	Quick and easy and safe	4/22/2017 2:01 PM
43	Weather, on way to work	4/22/2017 1:59 PM
44	weather, on way to work	4/21/2017 12:14 PM



The main concerns and feedback were as undernoted and these have been incorporated in the Action Plan:

- There are lots of pupils walking to school which is great.
- Request a painted walkway at the Peedie Sea Centre to separate pedestrians from traffic
- Remind parents not to drop off or pick up at Peedie Sea Centre
- A meeting could be held with OIC to discuss:
 - New pedestrian crossing at McLeod drive/Picky Road Junction
 - One way system - no right turn out of Muddiesdale Road
 - 20mph extension to Ayre Mills
- Consider relocation of SCPO at Co-op crossing to Pickaquoy Road/Muddiesdale Road crossing.