

Loch Ness Beast Race 2016

On 3rd September three members of the Papdale staff, accompanied by two keen parents, took part in the Loch Ness Beast Race 2016. This involved the intrepid team crawling through mud, leaping over fences, plunging into a rather chilly Loch Ness and scaling unnecessarily large walls. As well as being a challenge and lots of fun we were raising money for the ARCHIE Foundation which provides care, facilities and support for children and families from Orkney who have had to go south for medical treatment. It was a brilliant effort and as a team we are proud to have raised over £2500 for a great cause. Well done to the team; Mrs Smith, Mr Brown, Mr Hill, Niamh Woodrow's Dad, Stuart, and Aimee and Abbie Sim's Mum, Claire.

Shout out to Mrs Keldie who also completed the Beast Race with some of her native Shetlanders.



Recycle with Michael - Salvation Army

Michael Hutchings from the Salvation Army came to our school to tell us about a scheme to recycle old clothes and footwear. "Recycle with Michael" bags will be provided and all children at Papdale will be asked at the end of each term to ask their friends and family for any old clothes they would like to recycle. This would then be returned to school for collection. The proceeds are returned to The Salvation Army in the UK to fund their works details of which can be found at www.salvationarmy.org.uk. Our school will also receive a contribution to our funds. More information will go home to parents towards the end of each term to clarify arrangements.



Parking and Pickup/Drop off at School

Inappropriate parking around the school can also compromise the safety of children. This includes stopping on the double yellow lines in Willowburn Road, using the service vehicle only access at the end of the Infant Hall as a drop off point and blocking access to car parks by parking where there is no space or by using one of the taxi/disabled spaces.



We would ask for extreme care when manoeuvring, particularly reversing, in the car parks as children may be present. Whilst we appreciate that parking spaces are always at a premium we would encourage all motorists to park responsibly to keep all the children as safe as possible.

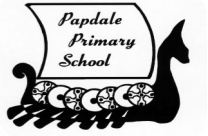
care when manoeuvring, car parks as children may appreciate that parking

PAPDALE PRIMARY SCHOOL

Tel:872650 Fax:870392

Email: admin.papdale@glow.orkneyschools.org.uk

Website: www.orkney.co/papdale



ISSUE 67

NOV 2016

Term 2 Newsletter

Dates for your Diary

We have a number of events, activities and dates for parents to note this term. More information will go out about many of the events nearer the time.

- Thursday 10 November Film Club - ET - Picky P5 & P6
- 14 - 18 November Anti Bullying Week
- Tuesday 15 November Pudsey Danceathon - PE Hall
- Thursday 17 November Film Club - Fantastic Mr Fox - Picky P3 & P4
- Friday 18 November Children in Need
- Thursday 1 December Tree Lighting Ceremony Rehearsal Cathedral
- Saturday 3 December Tree Lighting Ceremony Cathedral
- Monday 5 December Christmas Dinner
- Tuesday 13 December Christmas Concert (P3 play and Instrumental Groups)
- Thursday 15 December Strictly Come Dancing - Infant Hall
- Wednesday 21 December Christmas Service Cathedral (7E)
- End of Term 2
- Thurs 22 Dec - Wed 4 Jan Christmas Holidays
- Thursday 5 January Term 3 starts



We are now on Facebook!

Netball

P7 - Tuesdays 3-4pm - Infant Hall
P6 - Thursdays 3-4pm - Infant Hall



Netball Coach Wanted!

We are on the lookout for a coach to help with P5 Netball on Wednesdays 3-4pm. Please get in touch if you'd be able to help.



Football

P5 - P7 - Fridays 5-6pm
Kirkwall Grammar School

Badminton Training Camp

Monday 17th - Friday 21st October at KGS

Open to Primary 4 up to U18's

£20-£30 for the week.

To guarantee a place, email

eionballantine@btinternet.com

before Friday 23rd September



SUPA Club

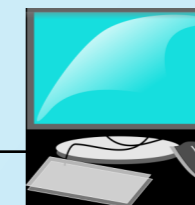
Ruth Hagan and staff members will be running the SUPA Club this session on Wednesdays 3 - 4pm for P5 - P7, in GP Room 1 and Infant Hall.

School Website

Please take the time to visit our school website:

www.orkney.co/papdale

It contains lots of information/photos and calendar of events.



Parent Questionnaire

Thank you to everyone who took the time to complete our Parental Engagement Questionnaire. There has been a very positive response so far, but there is still time to hand them in. Thank you.

Topshop

Whether you are looking for a school top for your child or you would like to donate one that they have grown out of, please call past the school reception at the main entrance for more information.

Tops of all sizes and styles are available for a small donation of your choosing to school funds.

